



## Data Sheet

## SDL MultiTerm 2009

*This datasheet on SDL MultiTerm® provides all the features and technical detail about SDL MultiTerm and the components that constitute a terminology management solution from SDL. Information on the features, system requirements and descriptions of each of the components is listed in this technical-focused document*

### What is SDL MultiTerm?

SDL MultiTerm provides one central location to store and manage terminology. By providing access to all those involved in applying terminology, such as engineers, marketing, translators and terminologists, it ensures consistent and high-quality content from source through to translation.

### What is concept-oriented terminology?

SDL MultiTerm's approach to terminology management differs from the traditional dictionary method of listing terms as separate entities. Its concept-based approach to terminology management means that all terms related to the same concept or idea are contained under the same entry. When working with a multilingual termbase, this approach allows users to work in any language direction and variations of terms such as synonyms or acronyms can be recorded in SDL MultiTerm under the same entry ID number. This approach also enables organizations to successfully manage current and obsolete terms, or preferred and rejected terms, allowing users to always apply the correct term.

### Features of SDL MultiTerm:

#### Database & Architecture

- SDL MultiTerm is a multi-tier client/server application, web and SOAP enabled. It runs as a Microsoft Windows service.
- SDL MultiTerm Server manages its user accounts within SDL Common Enterprise Application Framework (CEAF)
- Support for Windows authentication and LDAP
- Microsoft Windows 2003 and Windows 2008 Server support

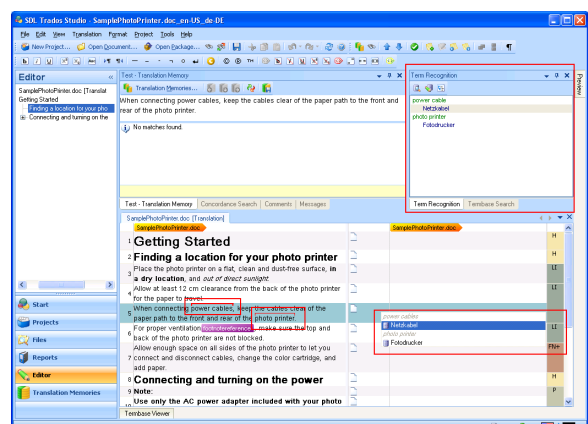
- Microsoft Windows Internet Explorer 7,8 support; Mozilla Firefox 3.0 support
- Microsoft Windows Vista support, Microsoft Windows XP support
- Microsoft SQL Server 2005 and 2008 support; all editions

#### Security

- Role-based security management and access rights management

#### Integration

- SDL MultiTerm integrates with SDL Trados Studio through active term recognition. While translating, active term recognition will automatically flag up any terms that appear in the termbase and these can be applied to the translation. It is also possible to add, edit and search for terms within the SDL Trados® Studio environment without having to open SDL MultiTerm Desktop
- Open API allows you to integrate SDL MultiTerm functionality within proprietary tools
- A dedicated toolbar integrated within Microsoft® Word allows you to search, retrieve data from and add content to both local and remote termbases
- Integration with SDL Global Authoring Management System® to apply terminology in authoring applications - Adobe® FrameMaker, Just Systems® XMetaL and PTC® Arbortext Editor
- Integration with SDL Passolo® software localization tool



Integration of SDL MultiTerm termbases within the SDL Trados Studio environment

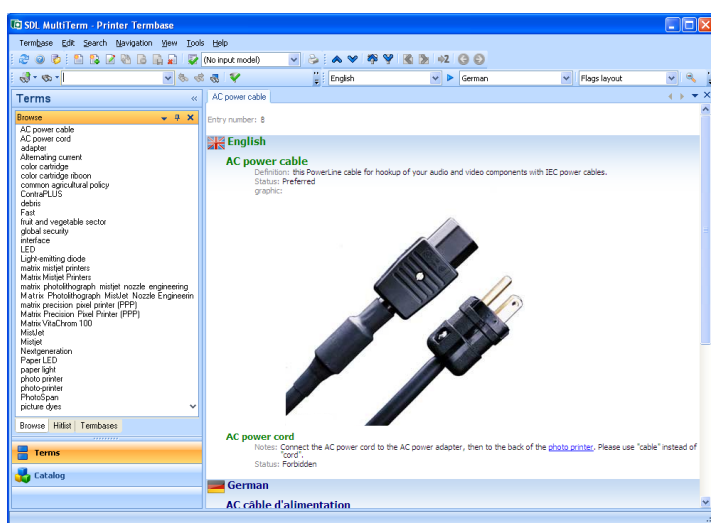


## Searching and Filters

- Fuzzy search - displays a list of corresponding entries that do not necessarily match the search term exactly (useful if the search term is transposed or misspelled)
- Wildcard search - locate all terms that contain a specific string of characters
- Full text search - locate a word or phrase that may exist anywhere within the complete termbase, including within definition, example or context fields
- Multiple termbase search - locate a term that may exist in multiple termbases
- Homonym search – identify potential duplicates in your termbase
- ‘Hitlist’ search display allows customizable view of multiple fields as well as terms within search results
- Apply simple or advanced filters to the termbase for a more refined search or during the importing or exporting of terms

## Usability and Interface

- Completely customizable termbase structure to suit any terminology needs
- Browse through terms in any language in the alphabetical browse pane
- Country flags depicting each language
- Attach digital media files such as video, sound or images
- WYSIWYG printing
- Link terms to website URLs via hyperlinks
- Link between terms and to entry ID number
- ‘Layout’ feature allows customized view of terms
- Customizable interface language (US English, German, French, Spanish, Mandarin Chinese, Japanese), colour scheme and toolbars
- Zoom function



## Languages

- Can manage as many languages as required
- Supports all Unicode based and double byte languages

## Extracting Terminology Data

SDL MultiTerm Extract is the terminology extraction tool, which allows you to extract terms from monolingual or bilingual documents and translation memories. SDL MultiTerm Extract uses a statistical extraction method. SDL PhraseFinder, which is provided as a component of SDL MultiTerm Extract, uses a linguistic extraction method. SDL MultiTerm Extract requires an additional license. Please see below for more detail

## Converting Terminology Data

SDL MultiTerm Convert is a specialized tool that converts terminology data to MultiTerm XML format. It is provided as a component in all SDL MultiTerm packages apart from SDL MultiTerm Extract. Please see below for further detail on SDL MultiTerm Convert

## Importing and Exporting Terminology Data

SDL MultiTerm exports terminology data into the following file formats specified below. You can design your own custom export of terminology data, for example defining which entries to export, which fields to export, and how they are labelled.

- XML (default)
- HTML, HTM
- RTF – Rich Text Format
- TXT – Tab-delimited text format

SDL MultiTerm imports from MultiTerm XML only. To import terminology data from other formats, you must convert the data into MultiTerm XML format by using SDL MultiTerm Convert

## Components of a terminology management solution with SDL MultiTerm:

SDL MultiTerm Feature	SDL MultiTerm Desktop	SDL MultiTerm Extract	SDL MultiTerm Team	SDL MultiTerm Server	SDL MultiTerm Online
Client access	✓	✓	✓	✓	✓
Term extraction		✓			
Shared access			✓	✓	✓
Web access					✓
Web service				✓	
Multi-user connectivity			✓	✓	✓
Access rights management				✓	✓

## SDL MultiTerm Desktop

Client-side application that covers all aspects of work with terminology. Editing and viewing of terminology can be carried out on both local and SDL MultiTerm Server hosted termbases.

## System requirements

SDL MultiTerm 2009 client software runs on Microsoft Windows XP and Windows Vista with Microsoft Internet Explorer 7 or higher installed. As minimum hardware requirements, we recommend a Pentium IV-based computer with 1 GB RAM and a screen resolution of 1280x1024. For optimum performance, we recommend 2 GB RAM and a more recent Pentium or compatible processor.

## SDL MultiTerm Server

SDL MultiTerm Server is the application server for high-performance terminology management, which allows access to server-based terminology for multiple users. Terminology can be shared and kept up-to-date centrally.

## SDL MultiTerm Online

SDL MultiTerm Server add-on that enables access to server-based termbases via the web through Internet Explorer 7 or 8 and Mozilla Firefox 3.0.

## SDL MultiTerm Team

SDL MultiTerm Team extends SDL MultiTerm Desktop by supporting shared termbase management in smaller groups for up-to five users working together in a LAN. SDL MultiTerm Team includes all SDL MultiTerm Desktop components, but adds server power to small teams. Based on SDL MultiTerm Server technology, its design guarantees connectivity means from all kind of client applications, such as SDL MultiTerm Desktop, Microsoft® Word and SDL MultiTerm Extract and lightweight deployment allows SDL MultiTerm Team to be setup easily with a mouse-click

## Conversion and Extraction Modules:

### SDL MultiTerm Convert – a component provided with all SDL MultiTerm packages

A specialized tool that converts terminology data to SDL MultiTerm XML format. With SDL MultiTerm Convert, you can easily convert data that is stored in other applications and formats to MultiTerm XML

- \*.mtw - MultiTerm 5 format
- TXT – Plain text
- CSV – Comma Separated Value
- XLS – Microsoft Excel (2002, 2003. 2007 users need to convert to CSV)
- TBX (TermBase eXchange) – open, XML-based standard for exchanging terminology data
- \*.XML - OLIF XML format
- \*.tdb files - SDL Termbase Desktop format
- \*.mdb files - SDL Termbase Online format

### SDL MultiTerm Extract - this is an optional component and requires a separate license

The terminology extraction tool that allows you to extract terms from monolingual or bilingual documents and translation memories, and to export data directly to local or remote termbases. It also allows you to check for terminology consistency between the termbase and a translated file. It uses a statistical extraction method, which determines the frequency at which candidate terms appear within the document. SDL MultiTerm Extract supports all monolingual or bilingual files in any language and can extract terms from documents in the following file formats:

- TMX – Translation Memory eXchange format
- TMW – SDL Trados Translator’s Workbench
- TXT - Plain text
- RTF – Rich Text Format
- .doc
- HTML, HTM, JSP, ASP, ASPX, SGML, SGM, XML
- Ventura (\*.txt)
- Adobe PageMaker (\*.txt)
- QuarkXPress (\*.qsc, \*.txg, \*.ttg, \*.tag)
- TTX – TRADOS tag file format
- Adobe InDesign (\*.isc)
- Microsoft Office Powerpoint (\*.ppt, \*.pps, \*.pot)
- Microsoft Office Excel (\*.xls,\*.xlt)

### SDL PhraseFinder – a component provided with the SDL MultiTerm Extract license

A terminology extraction tool with a linguistic extraction method that uses intelligent algorithms, language rules and a lexical database to analyze the contents of selected files and identify words and phrases that are possible terminology candidates. SDL PhraseFinder supports monolingual and bilingual files in:

- English
- French
- German
- Italian
- Spanish
- Dutch
- Portuguese

SDL PhraseFinder extracts terms from documents in the following file formats:

- SDLX Translation Document (ITD file)
- SDLX Translation Memory (MDB file)
- HTML, HTM
- TXT – Plain text
- RTF – Rich text format



## More information

For more information on SDL MultiTerm 2009, please visit:

Enterprise

[www.sdl.com/multiterm2009](http://www.sdl.com/multiterm2009)

LSP

[www.lspzone.com/multiterm2009](http://www.lspzone.com/multiterm2009)

Freelancer

[www.translationzone.com/multiterm2009](http://www.translationzone.com/multiterm2009)

---

SDL is the leader in Global Information Management (GIM) solutions that empower organizations to accelerate the delivery of high-quality multilingual content to global markets. Its enterprise software and services integrate with existing business systems to manage the delivery of global information from authoring to publication and throughout the distributed translation supply chain.

Global industry leaders rely on SDL to provide enterprise software or hosted services for their GIM processes, including ABN-Amro, Best Western, Bosch, Canon, Chrysler, CNH, Hewlett-Packard, Microsoft, Philips, SAP, Sony, Sun Microsystems and Virgin Atlantic.

SDL has implemented more than 500 enterprise GIM solutions, has deployed over 175,000 software licenses across the GIM ecosystem and provides access to on-demand translation portals for 10 million customers per month. Over 1,000 service professionals deliver consulting, implementation and language services through its global infrastructure of more than 50 offices in 30 countries. For more information, visit

[www.sdl.com](http://www.sdl.com)